



# PG412H

4GE+AC1200 GPON ONU

**802.11ac 2.4GHz**

**300Mbps**

**802.11ac 5GHz**

**900Mbps**



# PG412H

## WiFi 5 AC1200 DualBand GPON Router



IPv4 & IPv6  
Dual stack



E/GPON Dual  
Mode



Routing & Bridging  
Mode



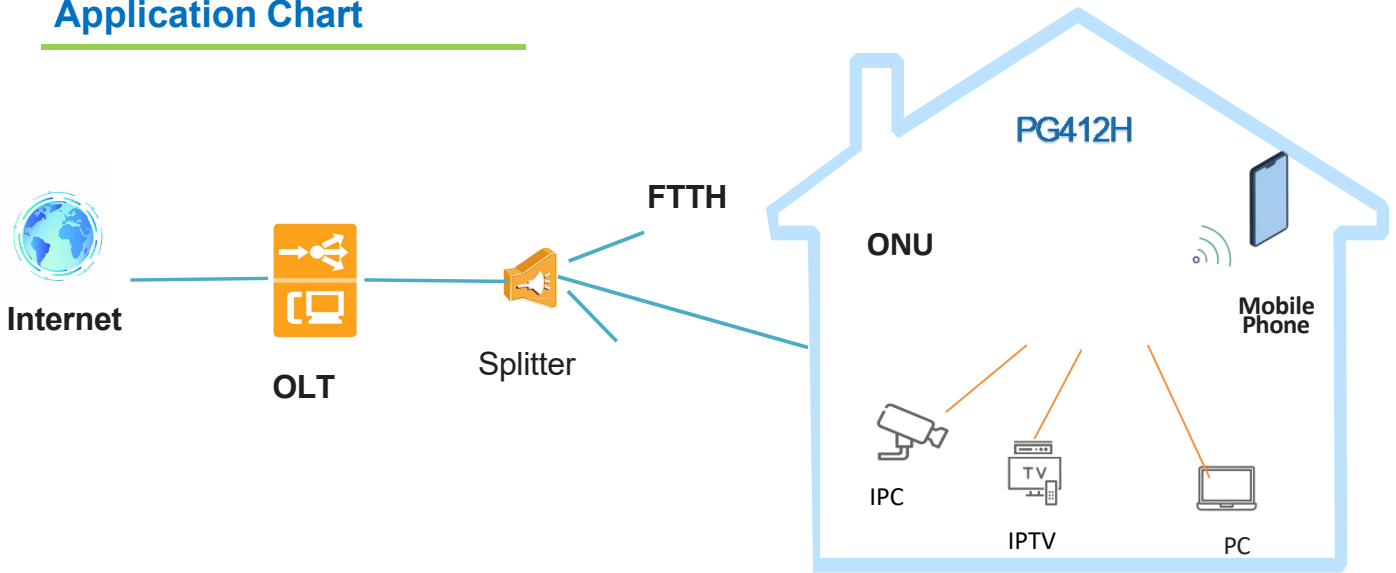
Dual Band 2\*Antennas  
AC 1200Mbps

### Introduction

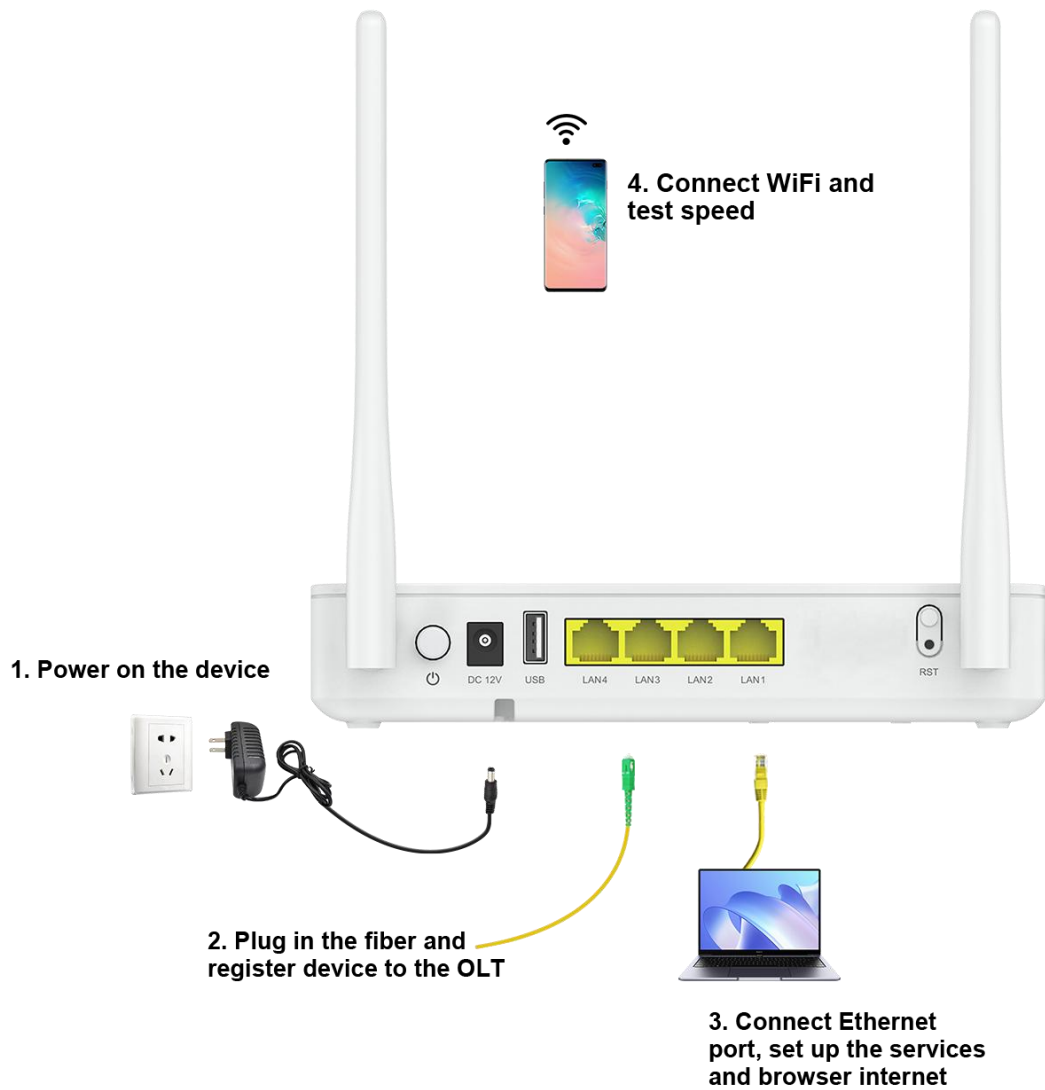
PG412H is 4GE+AC1200 with USB optional XPON(GPON and GEAPON dual mode) HGU ONU. The device is fully comply with ITU-T G.984/G988 and IEEE802.3ah. The equipment integrates the reliability, maintainability and security design of carrier-grade level, and provides customers with the last kilometer of broadband access to residential and corporate customers. It can also be applied to a strictly temperature environment, and can work stable for longtime without service interruption.

PG412H is interoperable with all brands of OLT and Easy to install, provisioning and maintenance. The device can identify the working mode of the OLT to automatically complete the switch between GPON and EPON, The device can be freely switched between bridge and routing modes, and supports PPPoE dial-up and IPv6 functions in routing mode to meet the needs of different scenarios.

## Application Chart



## Product Interface and LED



## Product Parameters

### Hardware Parameter

Dimension	190mm×157mm×38mm (L×W×H)
Net weight	270g
Operating condition	<ul style="list-style-type: none"><li>• Operating temperature: -10 ~ +50°C</li><li>• Operating humidity: 10 ~ 90% (non-condensing)</li></ul>
Storing condition	<ul style="list-style-type: none"><li>• Storage temperature: -40 ~ +70°C</li><li>• Storage humidity: 5 ~ 95% (non-condensing)</li></ul>
Power adapter	DC 12V/1A, external AC-DC power adaptor
Interfaces	XPON+4×GE+USB2.0+WiFi AC1200
Buttons	Reset, WPS
Indicators	Power, PON, LOS, Internet, LAN1-4, USB, 2.4G, 5G, WPS

### Interface Parameter

PON interface	<ul style="list-style-type: none"><li>• 1XPON port(EPON PX20+ and GPON Class B+)</li><li>• PON standard: GEAPON IEEE802.3ah, GPON ITU-T G.984</li><li>• SC single mode, SC/UPC connector</li><li>• TX optical power: 0~4dBm(EPON) or 0.5~5dBm(GPON)</li><li>• RX sensitivity: EPON: -27dBm, GPON: -28dBm</li><li>• Overload optical power: -3dBm(EPON) or -8dBm(GPON)</li><li>• Transmission distance: 20KM max</li><li>• Wavelength: TX1310nm, RX1490nm, CATV1550nm</li></ul>
LAN interface	<ul style="list-style-type: none"><li>• 4×GE Auto-negotiation RJ45 ports</li></ul>
USB interface	<ul style="list-style-type: none"><li>• 1×USB 2.0</li></ul>
WiFi interface	<ul style="list-style-type: none"><li>• Compliant with IEEE802.11b/g/n/ac</li><li>• WiFi: 2.4GHz 2×2, 5.8GHz 2×2 MIMO</li><li>• 2*5dBi external antennas</li><li>• Multiple SSID</li></ul>

## Software Features

PON	<ul style="list-style-type: none"><li>• XPON Dual Mode</li><li>• SN and LOID+Password multiple registration methods</li></ul>
Layer2	<ul style="list-style-type: none"><li>• Support VLAN transparent/ tag/ translate/ trunk</li><li>• Support Layer 2 802.1Q VLAN, 802.1P QoS, ACL etc</li></ul>
Layer3	<ul style="list-style-type: none"><li>• IPv4, IPv6 and IPv4/IPv6 dual stack</li><li>• Support bridge, router &amp; bridge/ router mixed mode</li><li>• DHCP v4/v6 Client/ Server, PPPoE &amp; Static</li><li>• Support Static Routing</li><li>• Support hardware NAT</li></ul>
Multicast	<ul style="list-style-type: none"><li>• Support IGMP V2 and MLD proxy/ snooping</li><li>• Support MultiCast VLAN &amp; MultiCast Maximum Address</li></ul>
Security and Firewall	<ul style="list-style-type: none"><li>• DDoS, Filtering Based on ACL/ MAC/ URL</li><li>• Support DDNS, ALG, UPnP, Port forwarding, DMZ</li><li>• HTTP/ SSH/ Telnet Service Access Control</li><li>• Support Parent control</li><li>• Support PPTP , L2TP, Pass-through service</li></ul>
QoS	<ul style="list-style-type: none"><li>• Support 4 queues</li><li>• Support SP, WRR, 802.1P and DSCP</li></ul>
WiFi	<ul style="list-style-type: none"><li>• Integrated 802.11b/g/n/ac</li><li>• Authentication: WEP/WAP-PSK(TKIP)/WAP2-PSK(AES)</li><li>• Modulation type: DSSS,CCK and OFDM</li><li>• Easymesh</li></ul>
Management	<ul style="list-style-type: none"><li>• Support Telnet, CLI, OMCI/ OAM ,TR069 and Web management</li></ul>

## Package

Package	<ul style="list-style-type: none"><li>• 1 x ONU</li><li>• 1 x Quick Installation Guide</li><li>• 1 x Power Adaptor</li></ul>
---------	------------------------------------------------------------------------------------------------------------------------------

## Ordering information

Product Name	Product Description	Accessories
PG412H	XPON+4GE+USB2.0+WiFi AC1200	AC-DC power adaptor: DC12V/1A